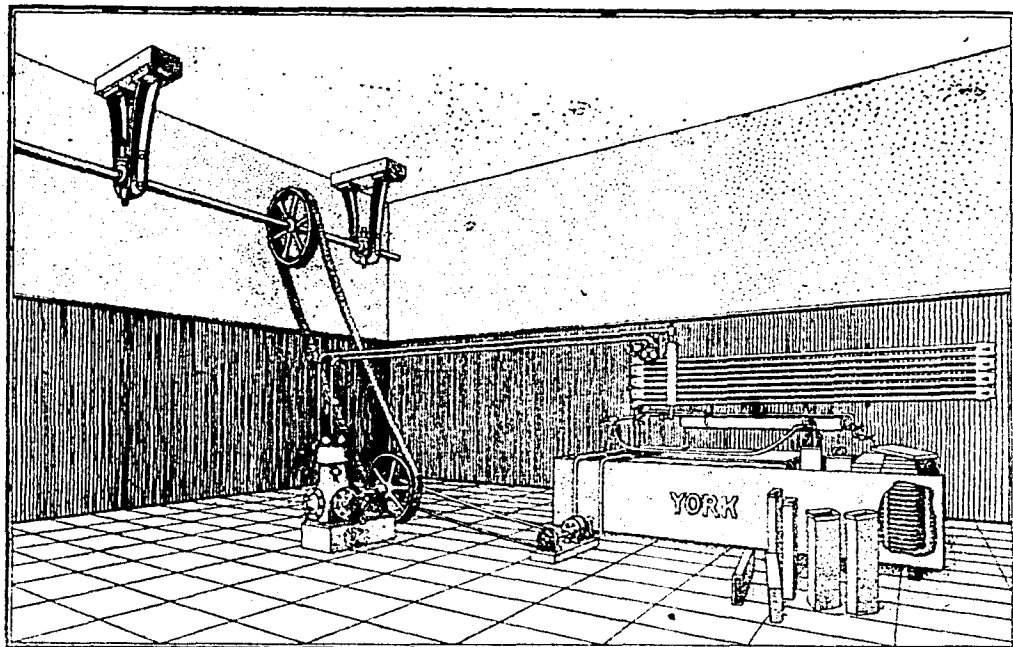


Pays for Itself Out of the Money It Saves



Type of small belt-driven machine with capacity up to 500 pounds of ice per day.

A York Ice Machine makes the owner independent of public ice supply.

Large consumers of ice, such as hotels, hospitals, boarding houses, stores, meat markets, dairies, offices, cold storage houses, etc., will be interested in a way of reducing their ice bill.

When it is considered that only 15% of the selling price represents the approximate cost of making, there is a large margin that could be saved if these consumers make ice themselves. In a very short time a

YORK ICE MACHINE

will pay for itself from this saving of money.

These machines are automatic in operation, requiring but connections to the motive power and feeding of water at the proper rate. There is no expensive labor charge, nor heavy depreciation. The same machine can be used for

Ice Making

Refrigeration

Cold Storage

Immediate delivery of small machines can be made from stock. Large ones can be supplied in about six months. Full information on request.

Andersen, Meyer & Co., Ltd.

1A Yuen Ming Yuen Road

Telephone Central 778

Agents in China
SHANGHAI

Canton— Foochow—Hankow—Harbin—Hongkong—Kalgan
Mukden—Peking—Tientsin—Tsinan—Urga—Vladivostok

